

80mm printers Virtual com user manual

1、Virtual COM setting

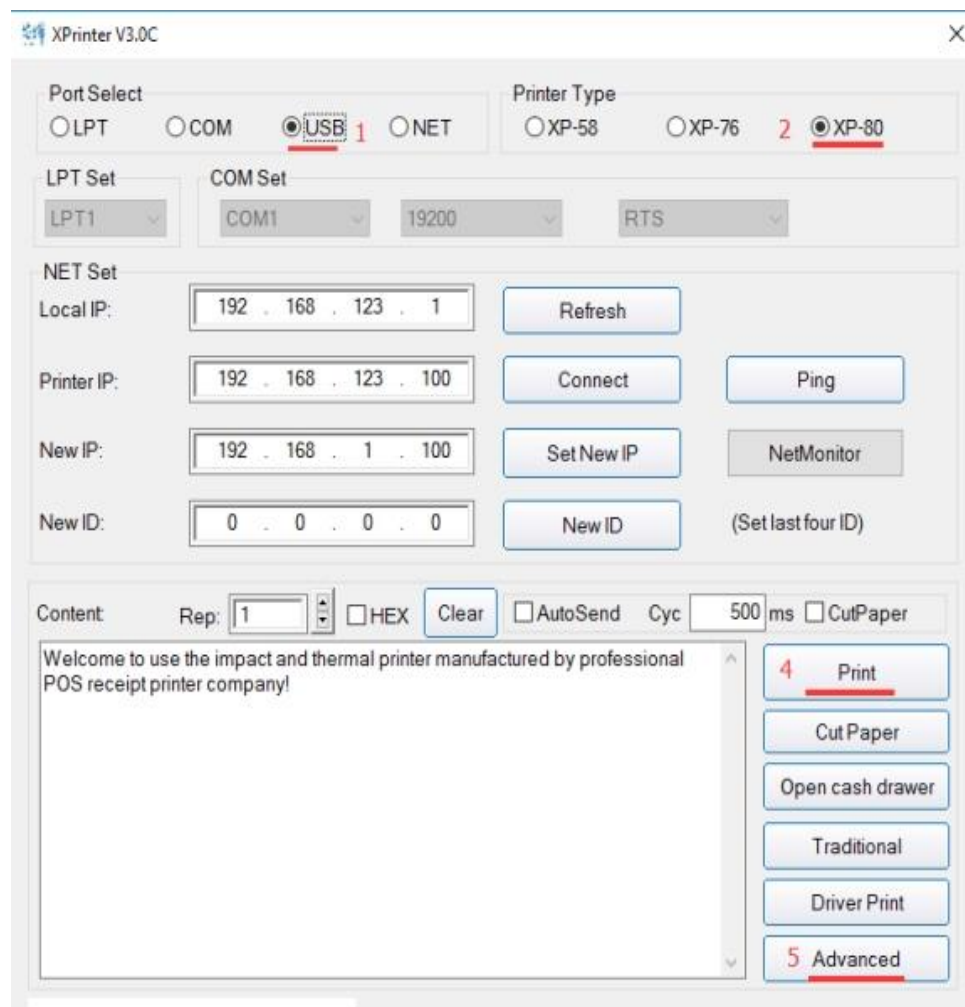
Steps :

(1) : Port ---USB

(2) : Printer Type----POS-80

(3) : Click the "print" button to test whether the printer is working

(4) : Via doing the above settings ,the printer is tested to be working. Then click the "Advanced" option.



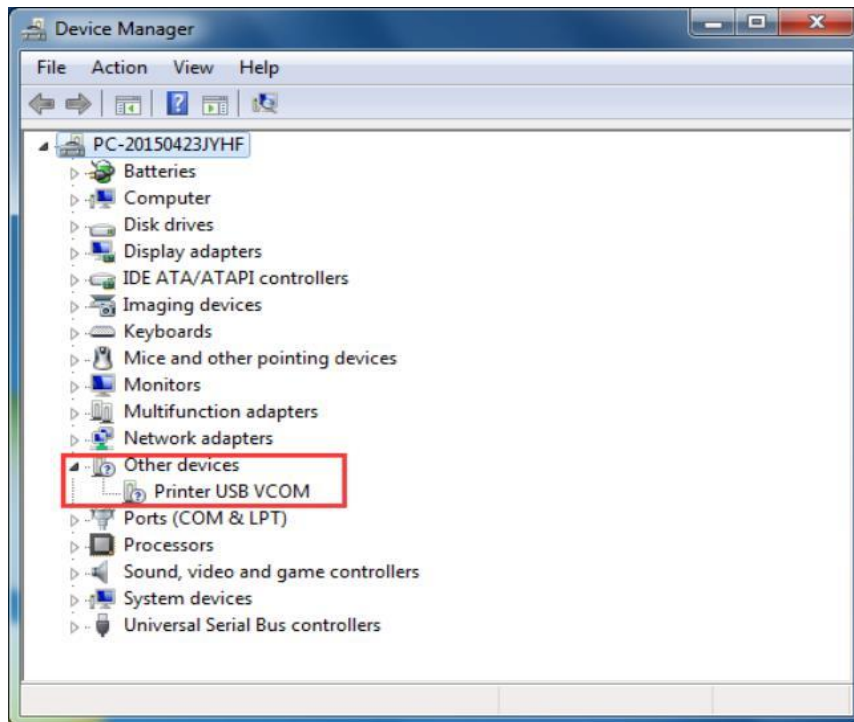
(5) : Click the "Advanced" Then the corresponding window is popped up. See the picture

Advanced

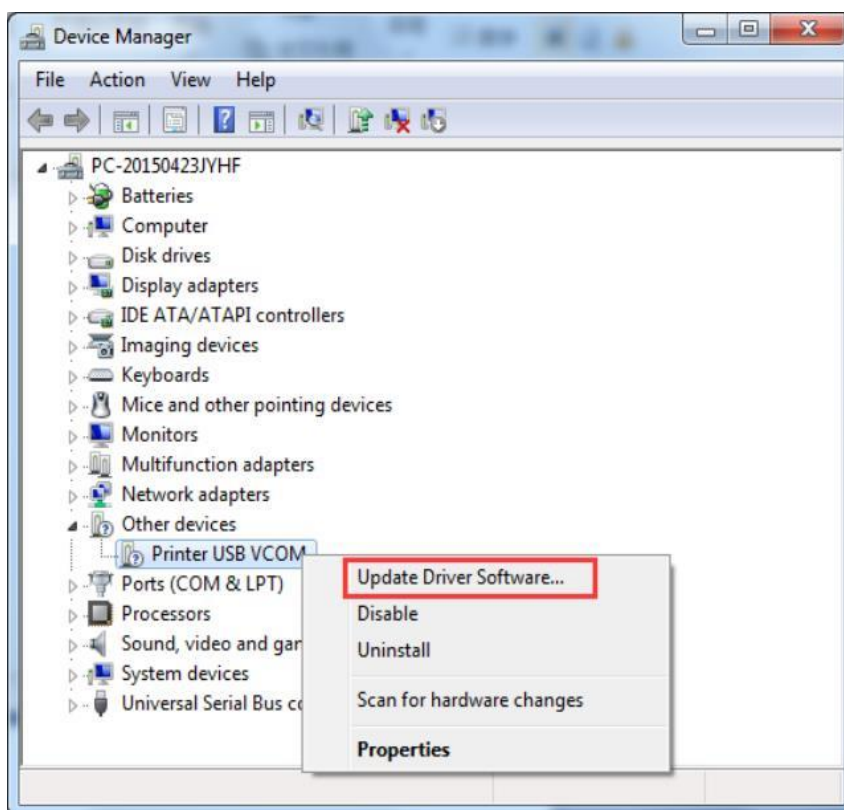
H Parameter Set:	Print H	Set Delta	5	
Code page Set:	PrintCodePage	SetCodePage	0	
NV Logo Test:	NV Download			
Barcode Printing test:	PrintBarCode	UPC_A	129	Height
P76 Buzzer Set:	BuzzerSet	OFF		
P76 Density Set:	Set	NORMAL		
P80 Black sens:	Set Sensitivity	12	12	<input type="checkbox"/> SensH
baud rate set:	BaudRate Set	19200	(Only P58 and P76E)	
DIP Setting:	P58 Set DIP	P80 Set DIP	P76 Set DIP	
2D Barcode test:	Print 2D Barcode			
Net Setting:	Set Net	BluetoothSet		
USB MODE Setting:	USB Printing	Virtual COM	6	
Black Mark Setting:	BlackMarkSet			
File data send:	Open File Send			

(6) : And then click the Virtual COM ,

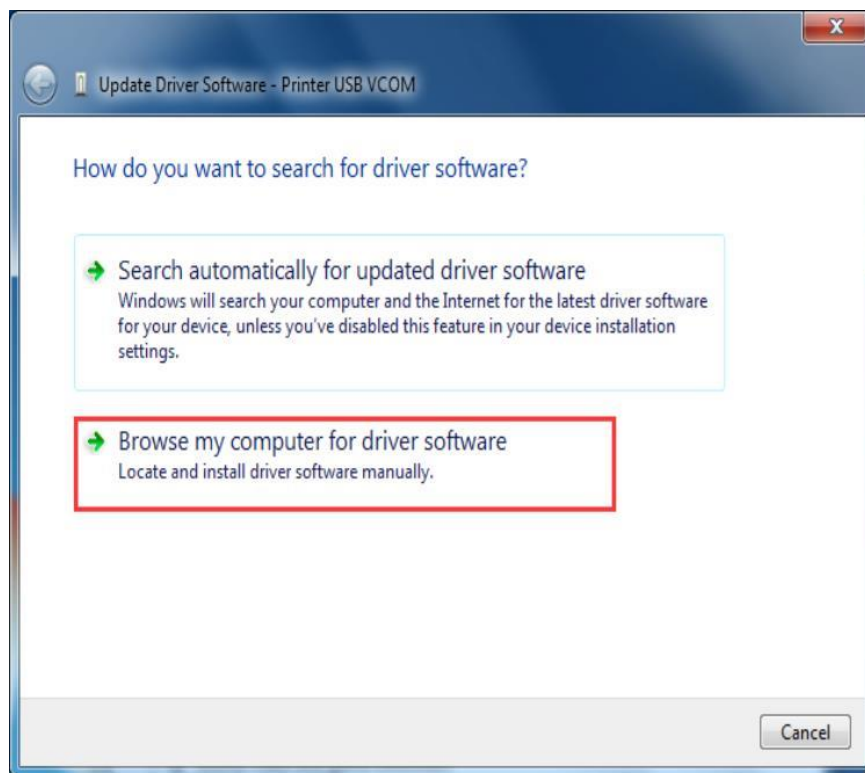
2.Entering into:"device manager" and find a device with question mark,asbelow pic :



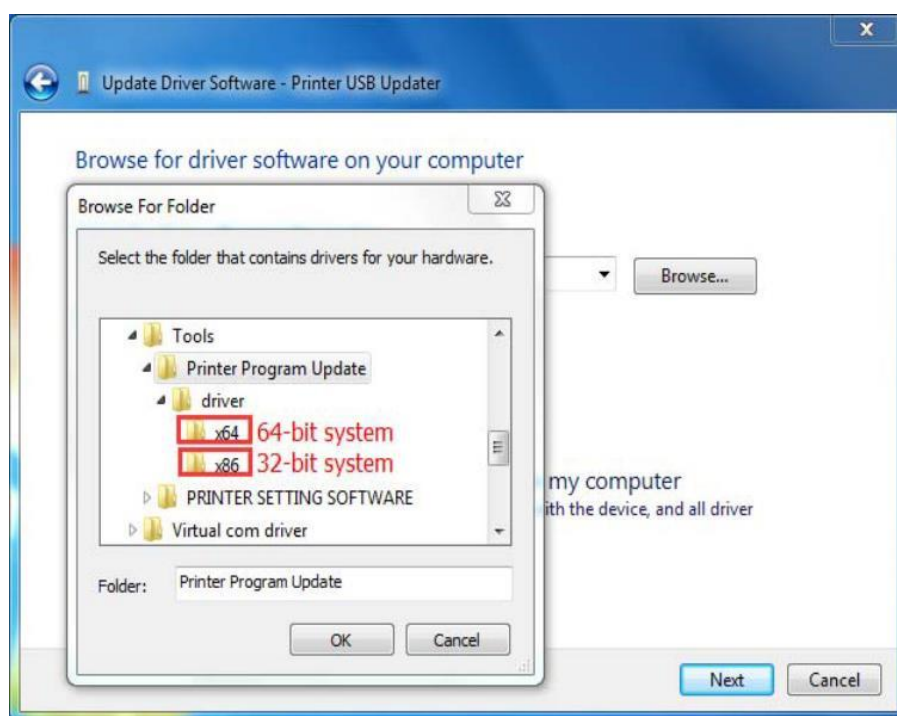
3.Right click the device then update driver software,as below pic:



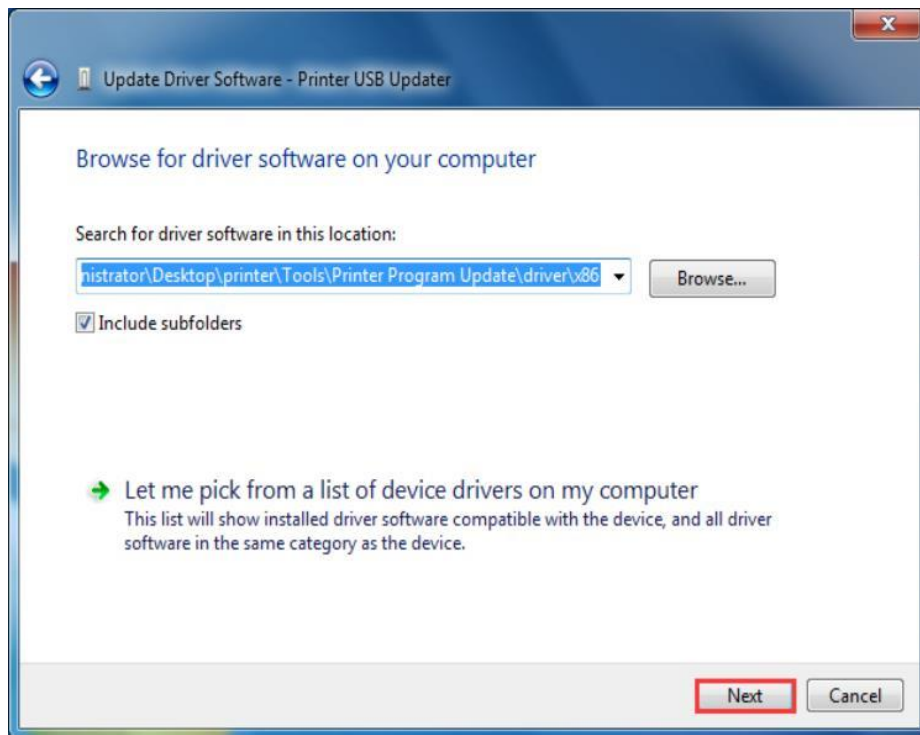
4. Browsing my computer for driver software, as below pic:



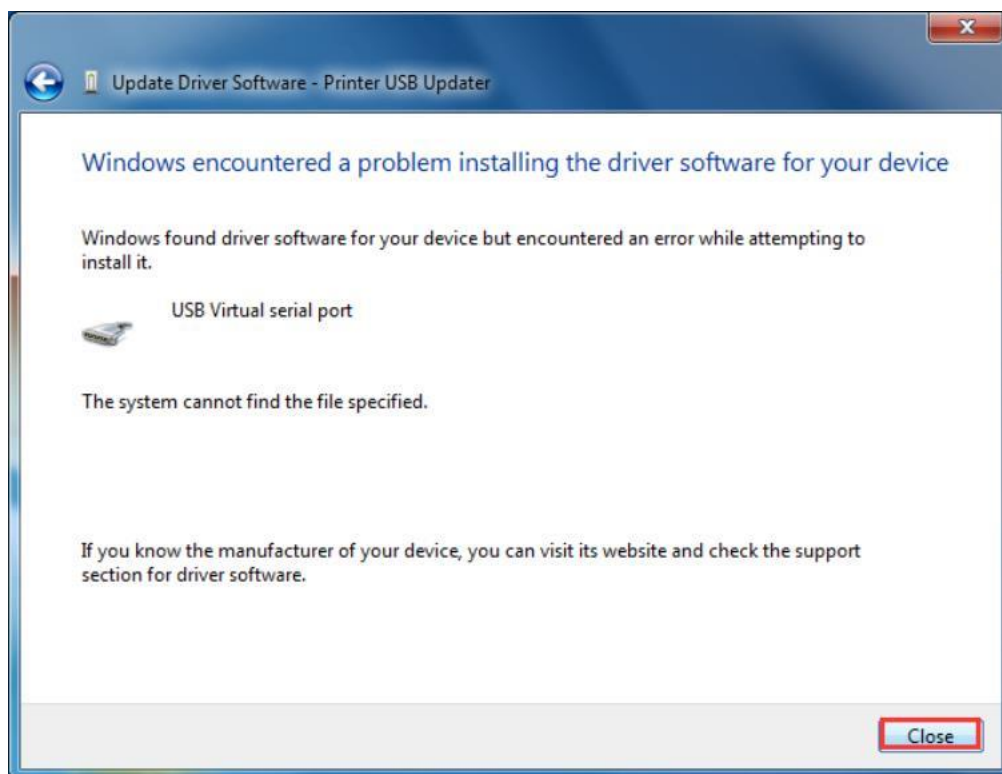
5. Choosing the right system according to different system bit, as below pic:



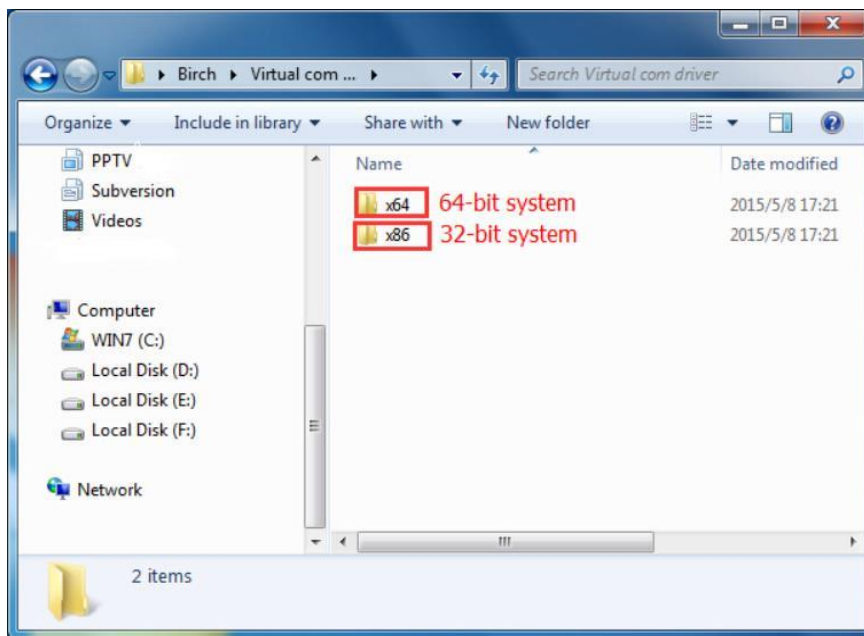
6.Win 32 as example,as below pic:



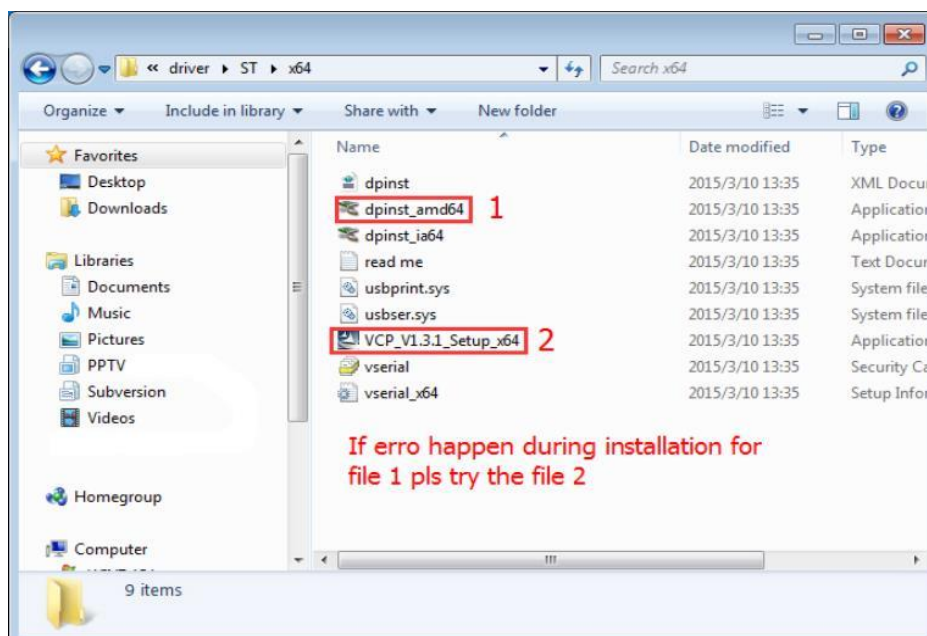
7.Exit installation if failed to update,as below pic:



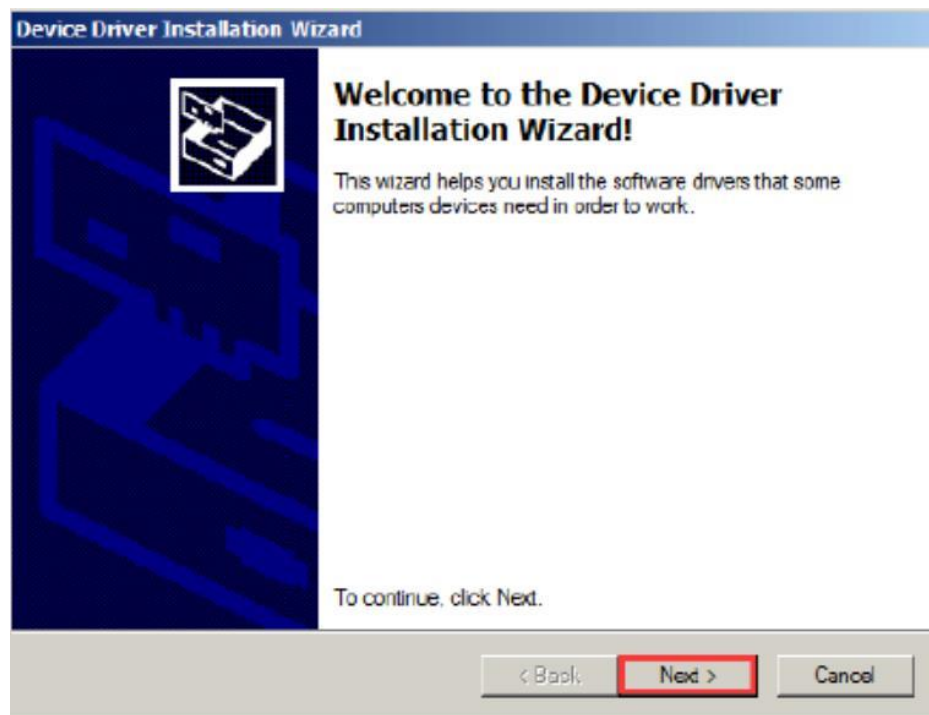
8. Try the second solution if failed to update, find the driver file which was include in printer program update file, choose the right system according to different system bit, as below pic:



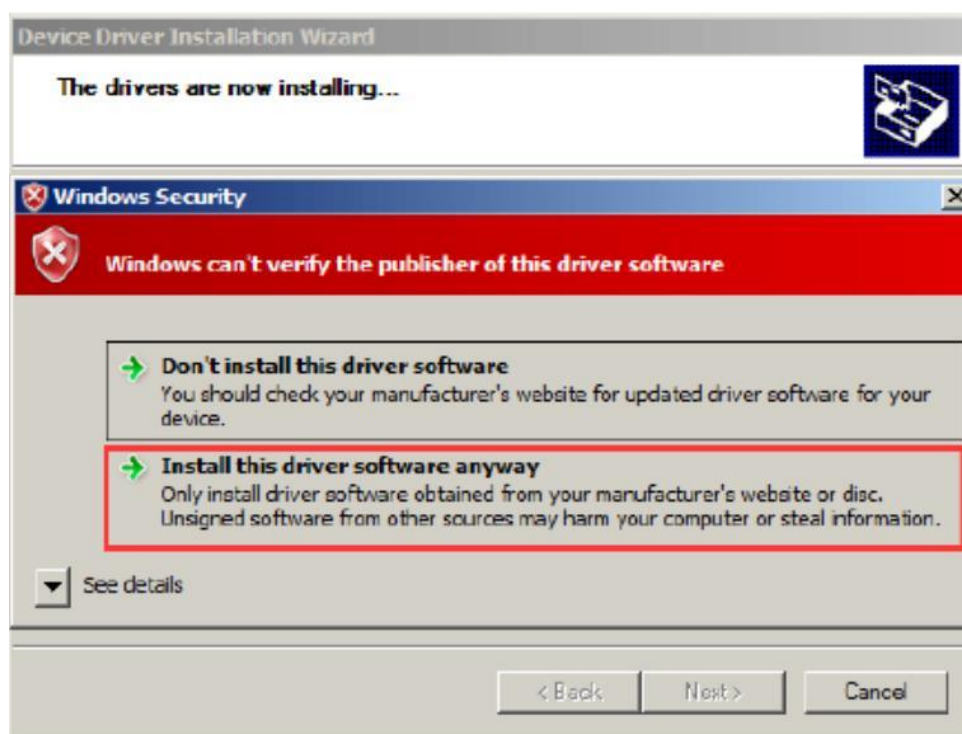
9. Double click driver program, as below pic:



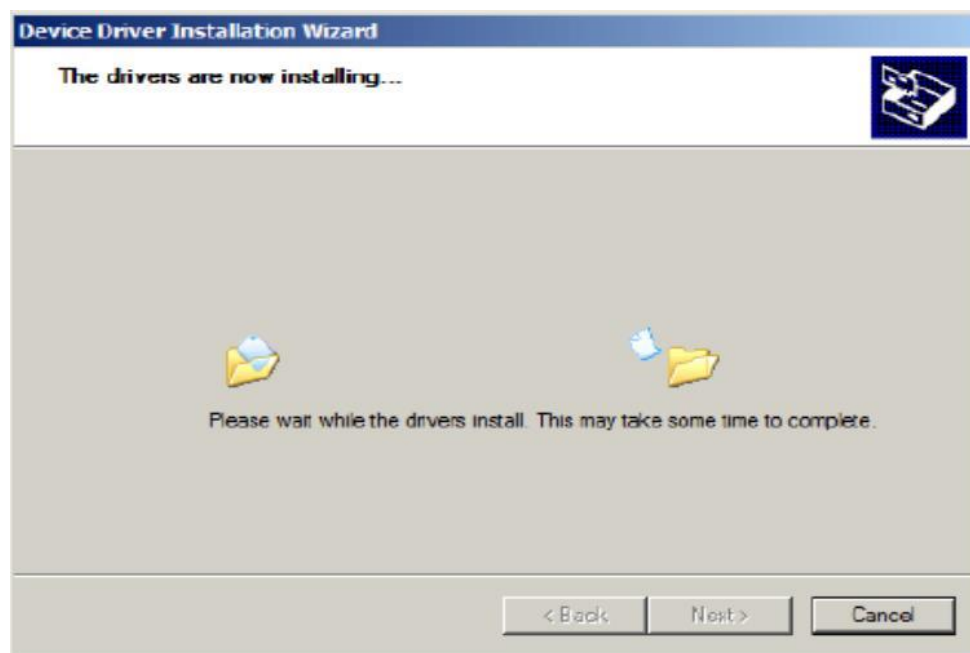
10. Click next step, as below pic



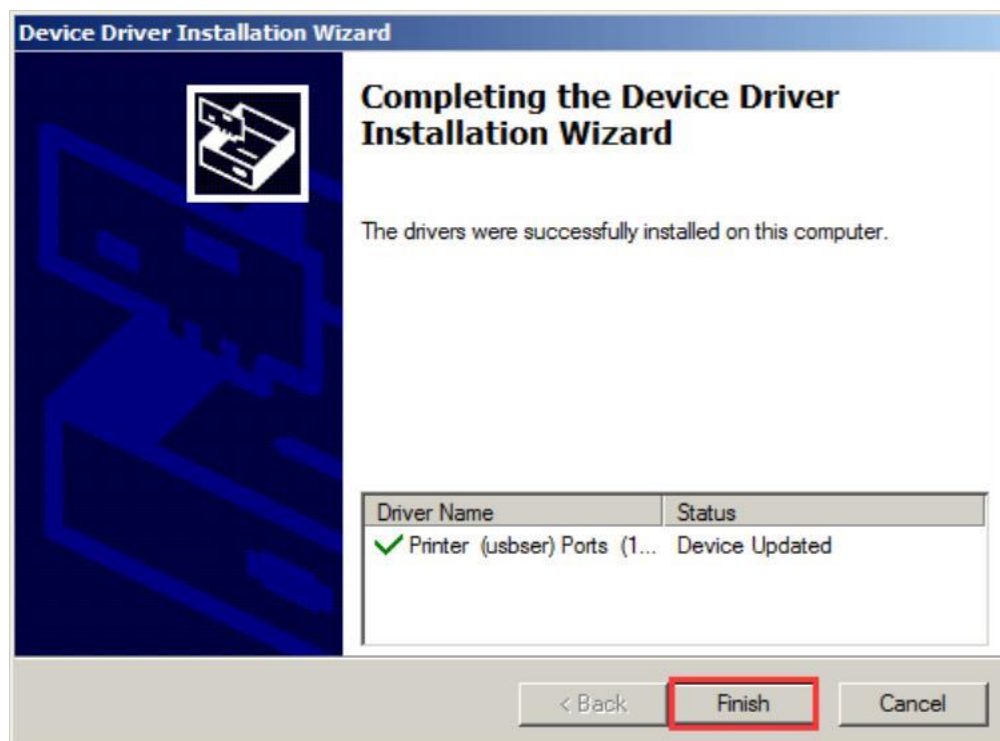
11、 As below pic:



12、Installing.....



13、Finish.



14. Finding the virtual Com port from device manager, as below pic:

